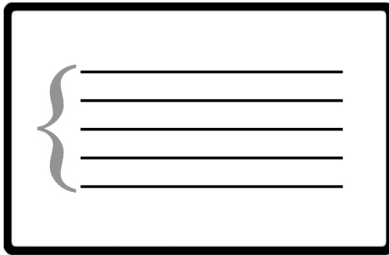
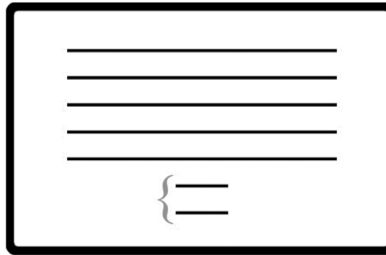


Music Theory 1



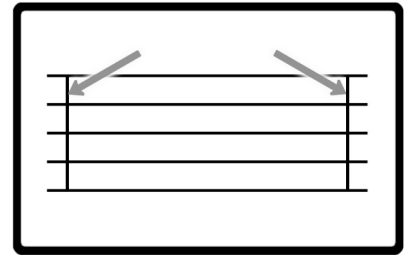
© StepWise Publications

Music Theory 2



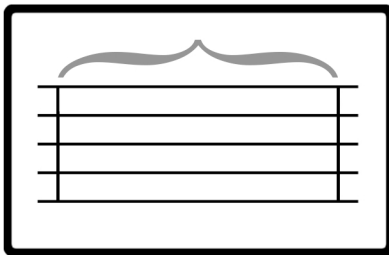
© StepWise Publications

Music Theory 3



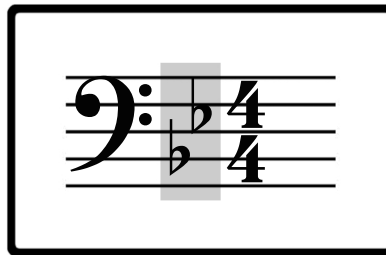
© StepWise Publications

Music Theory 4



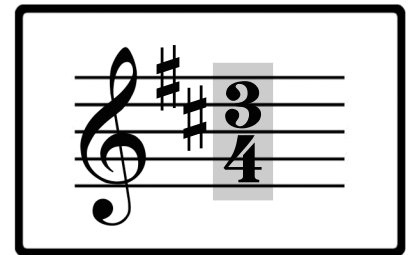
© StepWise Publications

Music Theory 5



© StepWise Publications

Music Theory 6



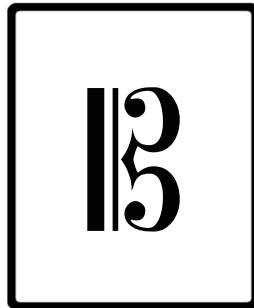
© StepWise Publications

Music Theory 7



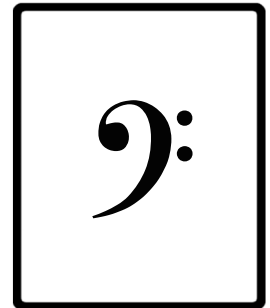
© StepWise Publications

Music Theory 8



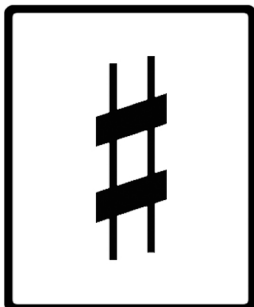
© StepWise Publications

Music Theory 9



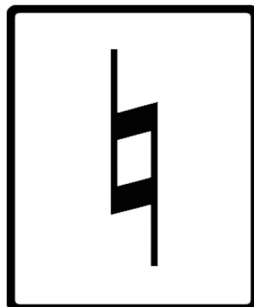
© StepWise Publications

Music Theory 10



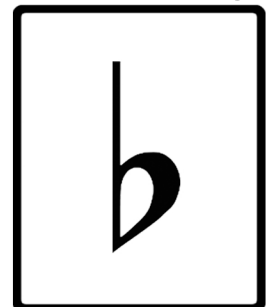
© StepWise Publications

Music Theory 11



© StepWise Publications

Music Theory 12



© StepWise Publications



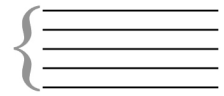
Bar Lines

Vertical lines which divide a staff into groups of beats



Ledger Lines

Lines (and spaces) added above or below the staff



Staff

The staff has 5 lines and 4 spaces



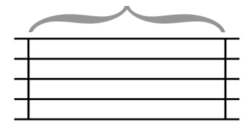
Time Signature

Shows how many beats are in each measure, such as 3 quarter notes ($3 \times \frac{1}{4}$) per measure



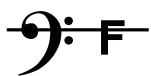
Key Signature

Shows which notes are sharp or flat in every measure



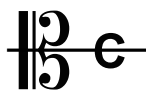
Measure or Bar

A group of beats between bar lines



Bass Clef

Shows that F is on the 4th line



Alto Clef

Shows that C is on the 3rd or middle line



Treble Clef

Shows that G is on the 2nd line



Flat

Lower the pitch
 $\frac{1}{2}$ step



Natural

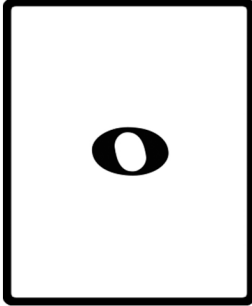
A note which is NOT sharp or flat
Also cancels a sharp or flat in a measure of music
AKA: WHITE keys on the piano



Sharp

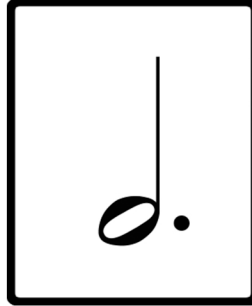
Raise the pitch
 $\frac{1}{2}$ step

Rhythm 1



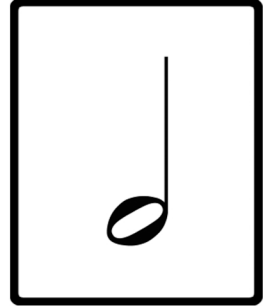
© StepWise Publications

Rhythm 2



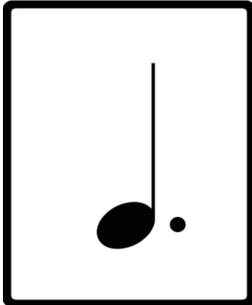
© StepWise Publications

Rhythm 3



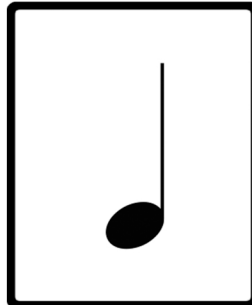
© StepWise Publications

Rhythm 4



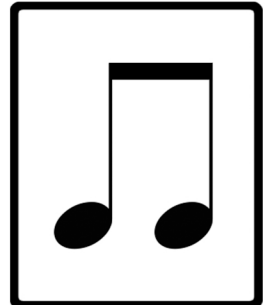
© StepWise Publications

Rhythm 5



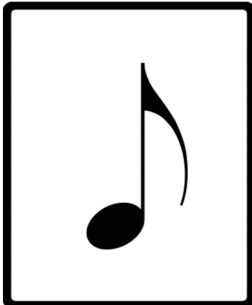
© StepWise Publications

Rhythm 6



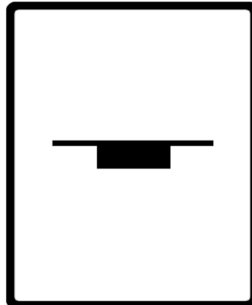
© StepWise Publications

Rhythm 7



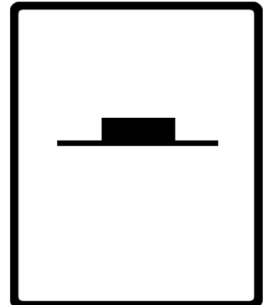
© StepWise Publications

Rhythm 8



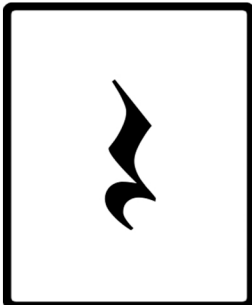
© StepWise Publications

Rhythm 9



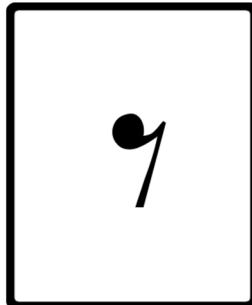
© StepWise Publications

Rhythm 10



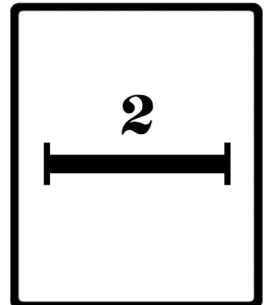
© StepWise Publications

Rhythm 11



© StepWise Publications

Rhythm 12



© StepWise Publications



Half Note

2 beats



Dotted Half Note

3 beats



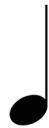
Whole Note

4 beats



Eighth Notes

$\frac{1}{2}$ a beat each



Quarter Note

1 beat



**Dotted
Quarter Note**

$1\frac{1}{2}$ beats



Half Rest

2 beats



Whole Rest

4 beats



Eighth Note

$\frac{1}{2}$ of a beat



2-Measure Rest

**1 - 2 - 3 - 4
2 - 2 - 3 - 4**



Eighth Rest

$\frac{1}{2}$ of a beat



Quarter Rest

1 beat